

## SPECIFICATIONS

## USB Connector

### Mechanical

**Mating Force:** 6.60Kg (14.54Lb) max.  
**Unmating Force:** 1.00Kg (2.20Lb) min.  
**Durability:** 1500 Cycles

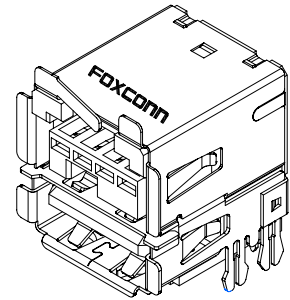
### Electrical

**Current Rating:** 1.5A  
**Contact Resistance:** 30mΩ max. (initial)  
 40mΩ max. (after life test)  
**Dielectric Withstanding Voltage:** 750V AC/1min min.  
**Insulation Resistance:** 1000MΩ min.

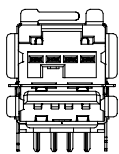
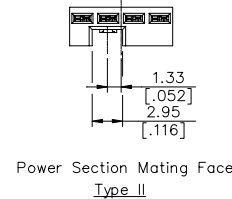
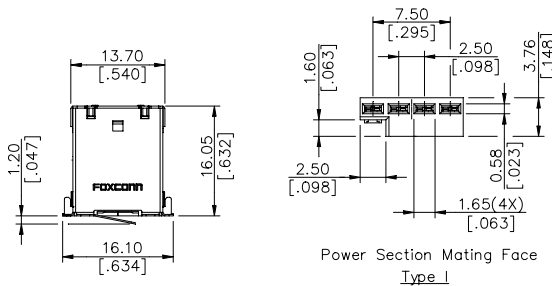
### Physical

**Housing:** Thermoplastic, UL 94V-0 rated  
**Contact and Shell:** Copper alloy  
**Plating:** See "ORDERING INFORMATION"  
**Operating Temperature:** -55°C to +85°C

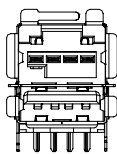
**UB Series**  
**Right Angle, T/H Type**  
**Plus Power**  
**8 Pos.**



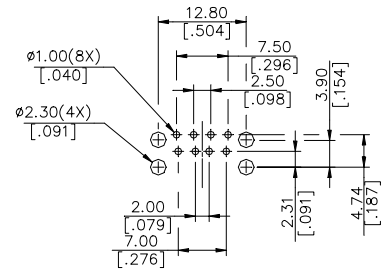
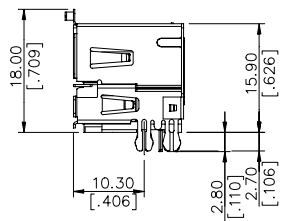
## DRAWING



Type II



Type I



RECOMMENDED P.C.B. LAYOUT

## ORDERING INFORMATION

PRODUCT NO.: UB 1 1 1 2 \* - GH\*

USB Series ————  
 USB A Type ————  
 Termination Type ————  
 0=Straight  
 1=Right Angle  
 3=Upright  
 5=SMT.  
 Contact Design Type ————  
 1=Female  
 No. of Pos. ————  
 1=4 Pos.

Modify Code ————  
 Mating Area Plating ————  
 3=30u" Gold  
 C=Gold Flash & 30u" Pa/Ni  
 H=30u" Gold (Lead Free)  
 Q=Gold Flash & 30u" Pa/Ni (Lead Free)  
 Body Length ————  
 2=4.13 [.163]  
 3=6.50 [.256]

UB1112*-GHR3	TYPE II	24	RED
UB1112*-GHB3	TYPE II	24	BLACK
UB1112*-GHT2	TYPE I	12	TEAL
UB1112*-GHB2	TYPE I	12	BLACK
P/N	DESCRIPTION	VOLTAGE	HOUSING COLOR